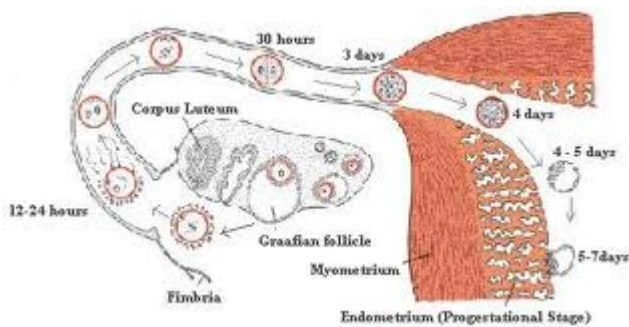


Implantation

Created: Wednesday, 18 May 2011 04:31 | Published: Wednesday, 18 May 2011 04:31 | Written by [Super User](#) | [Print](#)

What is Implantation?

Implantation occurs early stage of after the fertilization the [embryo](#) adheres to the wall of uterus. The embryo is in the [blastocyst](#) state. The fetus receives the oxygen for respiration and the nutrients from the mother induce its growth.



When does implantation occur?

Approximately 9 days after [ovulation](#) the implantation occurs in the uterus. If any problem persists in this period the embryo may fail to implant itself in the uterus and the pregnancy will not occur.



The implantation window

"Implantation window" is the particular period for implantation process to be occurred in female's body. Implantation does not occur at this time, then it indicates that something is wrong. This may lead to [miscarriage](#) rather than the continued pregnancy of a malformed fetus. Miscarriage means the baby would automatically aborted by the body and the uterus expel the malformed fetus

through the vagina. It will be painful for the mother and it has many emotional feelings also. This may psychologically affect the mother. But sometimes instead of giving birth to a malformed or handicapped child miscarriage is acceptable by the mother and she may have the feeling of giving birth to a baby again.

The implantation window is started by preparations in the [endometrium](#) of the uterus, both structurally and in the composition of its secretions.

Adaption of uterus

The uterus would be ready to receive the embryo. It makes itself in the prepared state for the implantation. The uterine walls made up of endometrium will get ready to support the embryo.

Predecidualization

- Thickness of the endometrium increases
- More [vascularized](#)
- Glands grow for more secretions.
- All the changes happen approximately 7 days after ovulation.
- A kind of rounded cells prepared by endometrium cover the area toward the uterine cavity.
- It may take about 9 to 10 days after ovulation.
- The layer of [decidual cells](#) is shed off in every [menstruation](#)

Decidualization

- Decidualization succeeds predecidualization if pregnancy occurs.

Parts of decidua

- The decidua has separate sections, but all with same composition.

Decidua basalis

- Located basalolateral to the embryo after implantation.

Decidua capsularis

- Grows over the embryo and cover it

Decidua Parietalis

- All other decidua on the uterine surface belongs to decidua parietalis.

Want to know more about “Mechanisms of implantation?” [Click here](#) to schedule live homework help from a certified tutor!

About eAge Tutoring:

[eAgeTutor.com](#) is the premium online tutoring provider. Using materials developed by highly qualified educators and leading content developers, a team of top-notch software experts, and a group of passionate educators, eAgeTutor works to ensure the success and satisfaction of all of its students.

[Contact us](#) today to learn more about our guaranteed results and discuss how we can help make the dreams of the student in your life come true!

Reference Links

- [http://en.wikipedia.org/wiki/Implantation_\(human_embryo\)](http://en.wikipedia.org/wiki/Implantation_(human_embryo))
- <http://www.prostatebrachytherapyinfo.net/PCT21.html>
- <http://www.scribd.com/doc/5525368/Human-fertilization-is-the-union-of-a-human-egg-and-sperm>
- <http://richmondmidwife.com/YourGrowingBaby.aspx>
- <http://www.youtube.com/watch?v=la3DpQhedHU>

Category:ROOT

[Joomla SEF URLs by Artio](#)