

Human Female Reproductive System

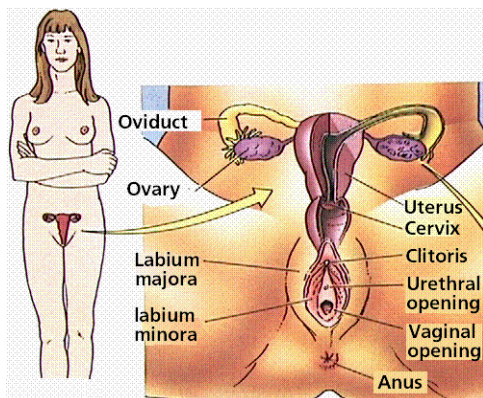
Created: Thursday, 12 May 2011 09:48 | Published: Thursday, 12 May 2011 09:48 | Written by [Super User](#) | [Print](#)

Female Genital System

The female reproductive system also known as female genital system contains two main parts:

Parts of Female Reproductive System

- **The uterus:** Hosts the developing fetus, produces vaginal and uterine secretions, and passes the male's [sperm](#) to the fallopian tubes.
- **The ovaries:** Produce the female's egg cells.

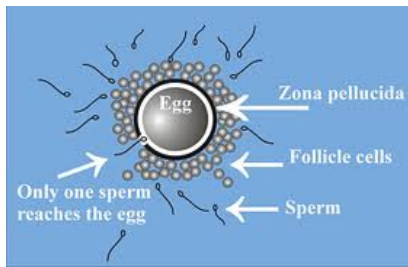


The Vagina

Meets the external organs at the vulva. Vulva includes the labia, clitoris and urethra.

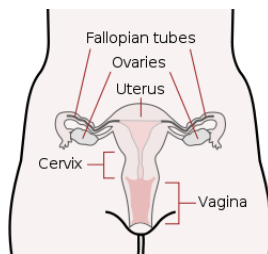
The [vagina](#) is attached to the uterus through the cervix, and the [uterus](#) is attached to the ovaries via the Fallopian tubes.

The [ovaries](#) release an [ovum](#) reaches the uterus through the [Fallopian tube](#).



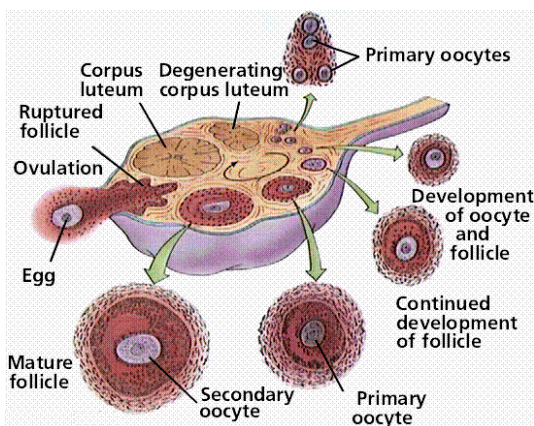
Fertilization Process

- The sperm penetrates the egg and fertilize it.
- The [fertilization](#) occurs in the [oviducts](#)
- Can happen in the [uterus](#)
- The [zygote](#) then implants itself in the uterus wall
- [Embryogenesis](#) and [morphogenesis](#) processes have been beginning hereafter.
- After the complete development, the [cervix](#) dilates and uterus contracts and pushes the fetus through [vagina](#). This is called as Child Birth.



Ova – some details

- Larger than [sperm](#)
- Formed during female's birth.
- Approximately every month one ovum is produced.
- Sent down the Fallopian tube attached to its [ovary](#) in anticipation of [fertilization](#).
- The egg is flushed out through [menstruation](#) if fertilization not occurs.



Embryonic Development

Chromosome determines the sex of a child at [conception](#). 23 pair of chromosomes is inherited from parents and 23 from each parent.

The mother's egg has one X chromosome (from the XX) and the father's sperm has either an X or Y chromosome (from XY).

That's why it's proved that the sex of the child is determined by father.

If the baby inherits the X chromosome from the father, the baby will be a female child with XX chromosomes. But if the baby inherits the Y chromosome from the father it will be a male child with XY Chromosome.

Want to learn more about "Embryonic Development"? [Click here](#) to schedule live homework help from a certified tutor!

About eAge Tutoring:

[eAgeTutor.com](#) is the premium online tutoring provider. Using materials developed by highly qualified educators and leading content developers, a team of top-notch software experts, and a group of passionate educators, eAgeTutor works to ensure the success and satisfaction of all of its students.

[Contact us](#) today to learn more about our guaranteed results and discuss how we can help make the dreams of the student in your life come true!

Reference Links:

- http://en.wikipedia.org/wiki/Female_reproductive_system
- http://www.youtube.com/watch?v=TPc8_D1c2aU&feature=related
- http://www.youtube.com/watch?v=TPc8_D1c2aU&feature=related
- <http://www.youtube.com/watch?v=SkcddD0LGIM>
- <http://www.cartage.org.lb/en/themes/sciences/lifescience/generalbiology/physiology/ReproductiveSystem/HumanReproduction/HumanReproduction.htm>

Category:ROOT

[Joomla SEF URLs by Artio](#)