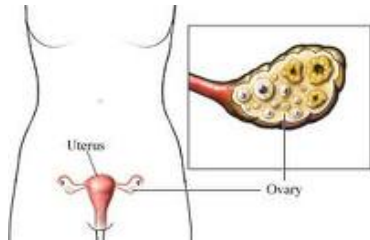


The Human Ovaries

Created: Friday, 13 May 2011 05:09 | Published: Friday, 13 May 2011 05:09 | Written by [Super User](#) | [Print](#)

What is an Ovary?

The ovary is the reproductive organ which produces the [ovum](#).

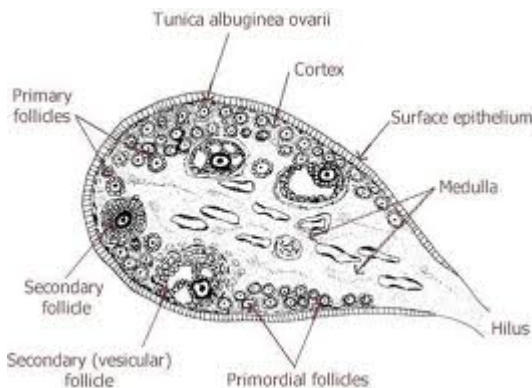


The Ovum is commonly known as egg and it produced in the female body

approximately 1/month.

It always present as a pair in the female reproductive organ.

often found in pairs as part of the vertebrate female [reproductive system](#). The ovary is a [gonad](#).



Anatomy of Ovary

- Oval shaped
- Human ovary size is 3 cm x 1.5 cm x 1.5 cm approximately.
- Located in the lateral wall of the pelvis.
- Location of ovary is known as [ovarian fossa](#).
- The fossa lies beneath the external iliac artery and in front of the [ureter](#) and the internal iliac artery.

Hormones

Ovaries secrete two important hormones [estrogen](#) and [progesterone](#).

1. Estrogen

- Responsible for the appearance of secondary sex characteristics of females at puberty
- Also responsible for maturation of reproductive organs
- Maintain the reproductive organs in their mature functional state.

2. Progesterone

- Promote [cyclic changes](#) in the [endometrium](#)
- The endometrium is prepared for pregnancy by progesterone.
- Maintains the endometrium in a healthy state during pregnancy.

Ligaments

Within the pelvic cavity paired ovaries lie on either side of the uterus. The ovaries are tethered to the body wall via the [suspensory ligament of the ovary](#).

Mesovarium is the part of the [broad ligament of the uterus](#) covers the ovary. Thus, the ovary invaginates into the peritoneum, making it the only interperitoneal organ.

Extremities

The Two extremities to the ovary:

1. **Tubal extremity:** The end to which the [uterine tube](#) attaches
2. **Uterine extremity:** Attached to the uterus through the ovarian ligament.

Histology of Ovary

Cell Types

- [Follicular cells](#)
- Granulosa cells
- [Gametes](#)
- [Germinal epithelium](#)
- The [tunica albuginea](#) covers the cortex.
- The ovarian cortex consists of ovarian follicles and stroma in between them.
- Cumulus oophorus, membrana granulosa corona radiata, zona pellucida, and primary oocyte are included in the follicles.
- Follicle has The zona pellucida, theca of follicle, antrum and liquor folliculi
- The corpus luteum derived from the follicles is in the cortex.
- Ovarian medulla is the innermost layer.

Want to know more about Ovaries? [Click here](#) to schedule live homework help from a certified tutor.

About eAge Tutoring:

[eAgeTutor.com](#) is the premium online tutoring provider. Using materials developed by highly qualified educators and leading content developers, a team of top-notch software experts, and a group of passionate educators, eAgeTutor works to ensure the success and satisfaction of all of its students.

[Contact us](#) today to learn more about our guaranteed results and discuss how we can help make the dreams of the student in your life come true!

Reference Links:

- <http://en.wikipedia.org/wiki/Ovary>
- <http://womenshealth.about.com/cs/ovarianconditions/a/yrovrisovuovads.htm>
- <http://www.youtube.com/watch?v=vpRio7E2FXw>

Category:ROOT

[Joomla SEF URLs by Artio](#)